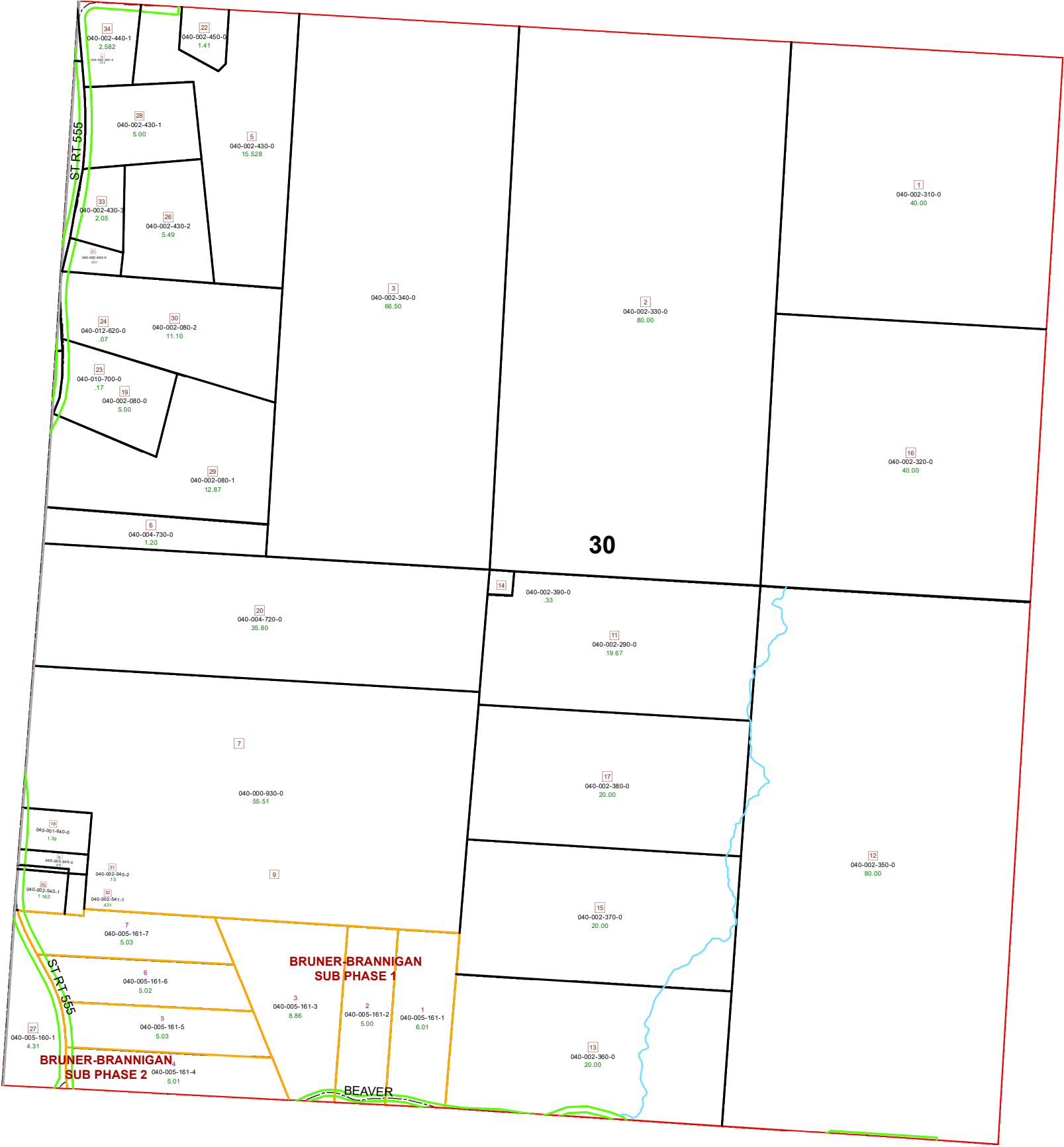
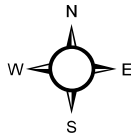


DEERFIELD TOWNSHIP SECTION 30 R13 TWP 9 MORGAN COUNTY, OH



PIN	VOL	PAGE	Owner	LegalDescr	Acres
040-004-720-0	D.V 165	652	COLLINS ALLIE A	R13 T09 S30 SD 20	35.8
040-004-730-0	OR56	544	COLLINS ALLIE A	R13 T09 S30 SD 6	1.2
040-000-930-0	D.V 165	652	COLLINS LINDA S	R13 T09 S30 SD 7-9	55.51
040-001-640-0	OR217	830	HAMILTON EARL ROGER	R13 T09 S30 SD 18	1.39
040-002-540-1	OR232	3279	HARRY EDWARD	R13 T09 S30 SD 25	1.162
040-002-540-2	OR232	3279	HARRY EDWARD	R13 T09 S30 SD 31	0.13
040-002-080-0	OR153	293	HORN DAVID K & DIANE E	R13 T09 S30 SD 19	5
040-002-430-0	D.V 116	118	KANGAS CHARLES & BARBARA	R13 T09 S30 SD 5	15.528
040-002-430-0	D.V 116	118	KANGAS CHARLES & BARBARA	R13 T09 S30 SD 5	15.528
040-002-440-0	D.V 116	118	KANGAS CHARLES & BARBARA	R13 T09 S30 SD 4	0.036
040-002-430-1	OR225	2336	KANGAS CHARLES K & MEGHAN L POLING	R13 T09 S30 SD 28	5
040-002-450-0	D.V 157	227	KANGAS DAVID W & MARGARET A	R13 T09 S30 SD 22	1.412
040-002-430-2	OR213	1698	KANGAS KEVIN & TERRI L	R13 T09 S30 SD 26	5.488
040-002-430-3	OR213	1698	KANGAS KEVIN & TERRI L	R13 T09 S30 SD 33	2.053
040-002-460-0	OR232	803	MILLER BRIAN & ROBERT & KRISTEN	R13 T09 S30 SD 21	0.901
040-005-160-1	OR227	3110	PERDUE BRANDON GENE	R13 T09 S30 SD 27	4.31
040-010-700-0	OR219	2569	PICONE CHRISTOPHER J & DANIELLE N STICKDORN	R13 T09 S30 SD 23	0.167
040-012-620-0	OR219	2569	PICONE CHRISTOPHER J & DANIELLE N STICKDORN	R13 T09 S30 SD 24	0.071
040-002-080-1	OR153	289	REED ALBERT L & DEBRA A	R13 T09 S30 SD 29	12.865
040-002-080-2	OR153	289	REED ALBERT L & DEBRA A	R13 T09 S30 SD 30	11.104
040-002-440-1	OR234	2792	SHAW LUCAS & KELSEY KANGAS	R13 T9 S30 SD34	2.582
040-002-540-0	OR233	1394	WILLS DAKOTA E	R13 T09 S30 SD 8 S	0.666
040-002-541-1	OR233	1394	WILLS DAKOTA E	R13 T09 S30 SD 32	0.431
040-002-360-0	OR99	664	WOLF CREEK CONSERVATION SOCIETY C/O JEFFRE	R13 T09 S30 SD 13 E	20
040-002-370-0	OR99	664	WOLF CREEK CONSERVATION SOCIETY C/O JEFFRE	R13 T09 S30 SD 15 E	20
040-002-380-0	OR99	664	WOLF CREEK CONSERVATION SOCIETY C/O JEFFRE	R13 T09 S30 SD 17 E	20
040-002-350-0	OR99	664	WOLF CREEK CONSERVATION SOCIETY C/O JEFFRE	R13 T09 S30 SD 12 E	80
040-002-290-0	OR99	664	WOLF CREEK CONSERVATION SOCIETY C/O JEFFRE	R11 T09 S30 SD 11 E	19.67
040-002-320-0	OR99	664	WOLF CREEK CONSERVATION SOCIETY C/O JEFFRE	R13 T09 S30 SD 16 F	40
040-002-310-0	OR99	664	WOLF CREEK CONSERVATION SOCIETY C/O JEFFRE	R13 T09 S30 SD 1 F	40
040-002-330-0	OR99	664	WOLF CREEK CONSERVATION SOCIETY C/O JEFFRE	R13 T09 S30 SD 2 E	80
040-002-340-0	OR99	664	WOLF CREEK CONSERVATION SOCIETY C/O JEFFRE	R13 T09 S30 SD 3 E	66.5
040-002-390-0	OR99	664	WOLF CREEK CONSERVATION SOCIETY C/O ROBER	R13 T09 S30 SD 14	0.33



Boundaries		Future Split	Parcel
Type		Hydro	ROW
County	Lot	Section	Township
		Roads	

